

**EUREKA 89 EVENTS**  
*Lunch Menu*

**MENU OPTIONS**

2 Course & 3 hours beverages - \$125 per person

Canapes, 2 Course & 3 hours beverages - \$135 per person

3 Course & 3 hours beverages - \$145 per person

Canapes, 3 Course & 3 hours beverages - \$155 per person

Choice menu available for groups of 50 or below  
(surcharge applicable)

All dietary requirements can be catered for upon request

**CANAPÉS ON ARRIVAL**

*Chef's selection, 2 items per person*

**Please choose two items in each course below  
to be served alternately.**

*House made bread and mixed leaf salad provided to tables*

**ENTRÉE**

Lamb shoulder, pickled kohlrabi, onion, micro cress

Japanese scallops, braised leeks, apple, hazelnut

Mushroom risotto, enoki crisp, truffle oil, parsley

Quail, sweetcorn, cauliflower, amaranth

**MAIN**

John Dory, braised fennel, baby vegetables, verjuice

Beef fillet & cheek, potato, onion, heirloom carrots

Chicken breast, pumpkin cream, edamame, grilled zucchini

Pork belly & loin, confit potatoes, salted turnips, apple cider jus

**DESSERT**

Dark chocolate mousse, cocoa biscuit, passionfruit sorbet

Tarte citron, meringue, lime gel, cherry textures

Mille-Feuille, caramel, vanilla, marscapone

Mont Blanc, Chantilly, chestnut, cassis sorbet

**OR**

Dessert platters to the table  
*(3 items per person, chef's selection)*

**OR**

Cheese platters to the table

**TO FINISH**

Tea, Coffee

**OPTIONAL MAIN SIDE DISHES**

*\$10 per dish per table*

Grains and seed salad, pomegranate, mimosa dressing

Handcut chips, rosemary, garlic

Steamed seasonal greens

Roasted beetroot, chèvre, pine nuts

**BEVERAGES**

*Please select 3 wines from the below selection*

Oakdene Sparkling NV, Bellarine Peninsula VIC

Dalzotto 'Pucino' Prosecco NV, King Valley VIC

Punt Road Pinot Gris 2017, Yarra Valley VIC

Rob Dolan 'True Colours' Chardonnay 2016, Yarra Valley VIC

Mount Macleod Pinot Noir 2017, Gippsland VIC

Sanguine Estate Shiraz 2015, Heathcote VIC

Furphy Refreshing Ale

Cricketers Arms Keepers Lager

Cricketers Arms Session Ale

San Pellegrino and Aqua Panna Mineral Waters

Juices and Soft Drinks



**GETTING THERE**

The Eureka 89 entrance is located on the east side of Eureka Tower near the palm trees at ground floor level. Please enter via the red carpet.

**CAR PARKING**

Wilson Parking is our preferred partner for car parking and is located at the base of Eureka Tower. Wilson Car Park is accessed from the corner of City Road and Southgate Avenue.

Preferred Eureka Level 89 visitor rates apply when exiting before 6am the following day.

- Monday – Friday (entry before 4pm): \$13\*
- Monday – Friday (entry after 4pm): \$ 6\*
- Weekends & Public Holidays: \$ 6\*

Please ensure that you validate your parking ticket at the Eureka Skydeck Gift Shop when departing before 10pm. Please ensure that you validate your parking ticket at the Eureka Level 89 exit when departing after 10pm.

*\*Parking rates subject to change*

**TAXIS**

There is a taxi rank on Riverside Quay adjacent to Eureka Tower.

**PUBLIC TRANSPORT**

Situated in Southbank set back from Melbourne’s Yarra River, Eureka 89 is an easy walk from the CBD, Federation Square or Crown Casino. Flinders Street train station is an approximate 5 minute walk from Eureka 89. There are also numerous tram and bus routes which drop near to the Southbank area.





EUREKA 89 EVENTS  
*Dinner Menu*

**MENU OPTIONS**

4 Course - \$135 per person  
(canapés, entrée, main course and dessert OR cheese)  
5 Course - \$145 per person  
(canapés, entrée, main course, dessert and cheese)

Choice menu available for groups of 50 or below  
(surcharge applicable)

All dietary requirements can be catered for upon request

**CANAPÉS ON ARRIVAL**

*Chef's selection, 2 items per person*

**Please choose two items in each course below to be served alternately.**

*House made bread and mixed leaf salad provided to tables*

**ENTRÉE**

Spiced yellowfin tuna, nashi pear, fennel, ginger dashi  
Lamb shoulder, pickled kohlrabi, onion, micro cress  
Japanese scallops, braised leeks, apple, hazelnut  
Mushroom risotto, enoki crisp, truffle oil, parsley  
Octopus, wakame, miso emulsion, whey  
Quail, sweetcorn, cauliflower, amaranth

**MAIN**

John Dory, braised fennel, baby vegetables, verjuice  
Beef fillet & cheek, potato, onion, heirloom carrots  
Chicken breast, pumpkin cream, edamame, grilled zucchini  
Lamb rump, celeriac rosti, broad beans, roasted parsnip  
Pork belly & loin, confit potatoes, salted turnips, apple cider jus  
Confit duck leg, spelt, black cabbage, heirloom baby beets

**MAIN SIDE DISHES** \$10 per dish per table

Grains and seed salad, pomegranate, mimosa dressing  
Handcut chips, rosemary, garlic  
Steamed seasonal greens  
Roasted beetroot, chèvre, pine nuts

**DESSERT**

Dark chocolate mousse, cocoa biscuit, passionfruit sorbet  
Tarte citron, meringue, lime gel, cherry textures  
Mille-Feuille, caramel, vanilla, marscapone  
Mont Blanc, Chantilly, chestnut, cassis sorbet  
Gianduja finger, chocolate crisp, chocolate gel, date purée  
Forest fruit tea mousse, blackberry, almond biscuit, viola

**OR**

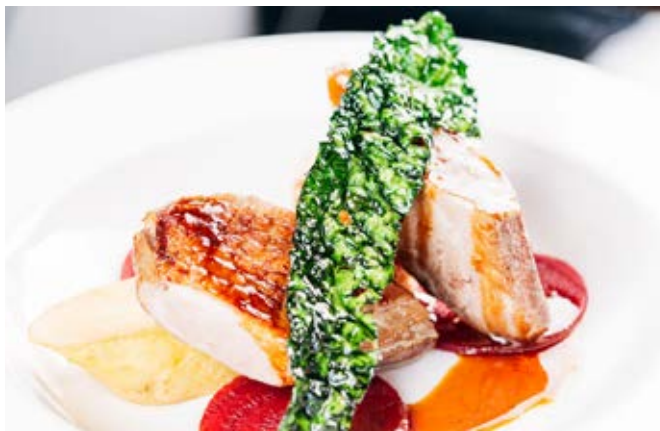
Dessert platters to the table  
(3 items per person, chef's selection)

**OR**

Cheese platters to the table

**TO FINISH**

Tea, Coffee



**GETTING THERE**

The Eureka 89 entrance is located on the east side of Eureka Tower near the palm trees at ground floor level. Please enter via the red carpet.

**CAR PARKING**

Wilson Parking is our preferred partner for car parking and is located at the base of Eureka Tower. Wilson Car Park is accessed from the corner of City Road and Southgate Avenue.

Preferred Eureka Level 89 visitor rates apply when exiting before 6am the following day.

- Monday – Friday (entry before 4pm): \$13\*
- Monday – Friday (entry after 4pm): \$ 6\*
- Weekends & Public Holidays: \$ 6\*

Please ensure that you validate your parking ticket at the Eureka Skydeck Gift Shop when departing before 10pm. Please ensure that you validate your parking ticket at the Eureka Level 89 exit when departing after 10pm.

*\*Parking rates subject to change*

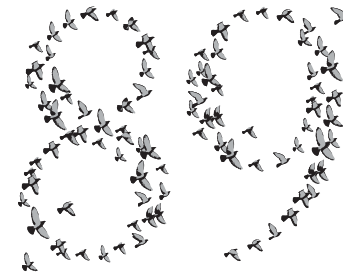
**TAXIS**

There is a taxi rank on Riverside Quay adjacent to Eureka Tower.

**PUBLIC TRANSPORT**

Situated in Southbank set back from Melbourne’s Yarra River, Eureka 89 is an easy walk from the CBD, Federation Square or Crown Casino. Flinders Street train station is an approximate 5 minute walk from Eureka 89. There are also numerous tram and bus routes which drop near to the Southbank area.





**EUREKA 89 EVENTS**  
*Degustation Events Menu*

Food Only \$165 per person

Matched with Wines \$280 per person

Up to 4hr event duration

*Menu and wine vintages subject to seasonal changes*

CANAPÉS ON ARRIVAL

*Eureka 89 Signature Cocktail*

MUSSELS

Smoked eel, potato, wasabi

*Punt Road 'Napoleon Vineyard' Sparkling 2014, Yarra Valley Victoria*

HEIRLOOM BEETS

Gruyere, macadamia, goat's milk

*Clic Pinot Grigio 2016, Friuli-Venezia Italy*

KING GEORGE WHITING

Roasted walnut, black garlic, pickled rock samphire

*Monkey Brains Nero d'Ávola Rose 2017, Murray Darling Victoria*

PHEASANT

Cauliflower, smoked carrot, potato wafer

*Giant Steps Pinot Noir 2017, Yarra Valley Victoria*

CAPE GRIM BEEF

Mushroom, dried lactose, charred baby onion

*Yangarra PF Shiraz 2017, McLaren Vale South Australia*

CHEESE or SWEET

Chef's selection

*Sommelier selection*

HAZELNUT

Chocolate, date, coffee

*Sommelier selection*

Tea, coffee, mineral waters





**GETTING THERE**

The Eureka 89 entrance is located on the east side of Eureka Tower near the palm trees at ground floor level. Please enter via the red carpet.

**CAR PARKING**

Wilson Parking is our preferred partner for car parking and is located at the base of Eureka Tower.

Wilson Car Park is accessed from the corner of City Road and Southgate Avenue.

Preferred Eureka Level 89 visitor rates apply when exiting before 6am the following day.

Monday – Friday (entry before 4pm): \$13\*

Monday – Friday (entry after 4pm): \$ 6\*

Weekends & Public Holidays: \$ 6\*

Please ensure that you validate your parking ticket at the Eureka Skydeck Gift Shop when departing before 10pm. Please ensure that you validate your parking ticket at the Eureka Level 89 exit when departing after 10pm.

*\*Parking rates subject to change*

**TAXIS**

There is a taxi rank on Riverside Quay adjacent to Eureka Tower.

**PUBLIC TRANSPORT**

Situated in Southbank set back from Melbourne’s Yarra River, Eureka 89 is an easy walk from the CBD, Federation Square or Crown Casino. Flinders Street train station is an approximate 5 minute walk from Eureka 89.

There are also numerous tram and bus routes which drop near to the Southbank area.

